



PRINCE OF WALES HOSPITAL

威爾斯親王醫院

30-32 Ngan Shing Street, Sha Tin, N.T., Hong Kong Tel: (852) 2632 2211 Fax: (852) 2637 8244  
香港新界沙田銀城街三十至三十二號 電話：2632 2211 傳真：2637 8244

Department of Chemical Pathology

From: Prof CWK Lam To: CCE, HCE  
Hon Chief of Service All COSs  
Department of Chemical Pathology All DOMs  
Tel/Fax No: 2632-3338 / 2636-5090 PWH  
Date: 14 December 2004

---

**SARS-CoV serum RNA test  
Change in specimen packaging requirements**

A new set of specimen transportation guidelines for the transfer of diagnostic specimens within NTEC has taken effect. Consequently, the packaging requirements for the transfer of blood specimens within the Prince of Wales Hospital for the SARS-coronavirus serum RNA test are to be changed accordingly to be in line with the new guidelines, with immediate effect.

Any patients requiring the SARS-coronavirus serum RNA test should be considered as suspected SARS patients. As a result, the blood specimens collected from such patients should be packaged according to the procedures for the packaging and transfer of specimens with high infectious risk depicted in the guidelines (see attachment).

Specimens not packaged according to this guideline will be rejected.

From today onwards, the Bio-bottles that are currently placed in the infectious diseases wards should be returned to the Department of Chemical Pathology.

This change is only applicable to the transfer of specimens within PWH.

Thank you for your kind attention.

C W K Lam

Copy to:  
Dr Michael Suen (CC (Path))  
Dr KK Lai (SDCS)  
Mr Samson Quek (AHA, AHNH)  
Ms Jessie Lam (Path, PWH)  
Mr KC Ho (ChemPath, PWH)

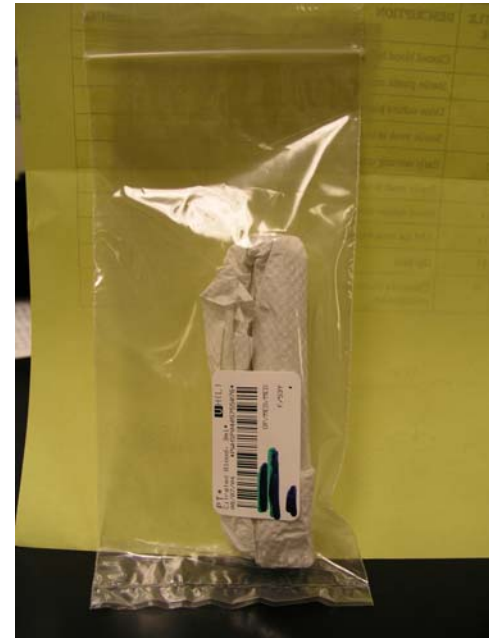
### 3. 高危樣本的特別處理守則

- 所有懷疑或證實染上高度傳染性疾病的病人樣本，包括**SARS**病人的所有樣本，禽流感病人呼吸道樣本；跟據醫院管理局之指引，病房運送高危樣本時，必須遵守一套特別運送守則
- 請勿將高危樣本與其他樣本放在同一標本運送箱內

## 3.1 運送高危樣本 在院內運送化驗樣本 (一)

步驟：

1. 用吸濕物料把化驗樣本包好
2. 如果使用Laboratory Request System (LRS), 病房需複印(Reprint) 多一個化驗樣本標籤，分別貼在樣本上及密封膠袋外面



## 3.1 運送高危樣本 在院內運送化驗樣本 (二)

3. 如使用化驗表格；將包好的化驗樣本放入密封膠袋內；每個膠袋祇可盛載化驗表格列明的化驗樣本
4. 將盛載化驗樣本的密封膠袋，一起放入獨立標本運送箱內，然後運送到化驗室

